



MIRACLE
RECREATION EQUIPMENT COMPANY

Installation Guide

April 3, 2009

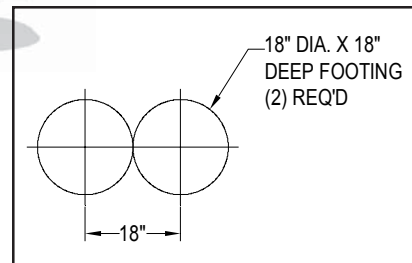
Rev. A

Bug Bites® "C" Spring Rider - Buzzy

IMPORTANT! Prior to installation of any components, refer to **Playsystem Installation Guidelines and Tips** in the *Install 101* section of your manual. This section will provide important tips pertaining to **site preparation, footings, system stabilization**, and other necessary information **vital to the success of your installation.**

961

Buzzy "C" Spring Rider



Top Views not shown. For Footing Layouts, refer to Footing Assembly illustrations on page 4.

TOOLS AND EQUIPMENT REQUIRED

Also see 'Suggested Tools & Equipment' (Doc. # D70052) in 'Installations 101'

1. Concrete for footings, wheelbarrow or mixer, 5 gallon bucket, water supply
2. Digging equipment for footings (spade shovel, post hole digger, auger)
3. 2 x 8's or other wood, nails, hammer to construct frame for concrete footing assembly
4. Tape measure and level
5. Allen and 6-lobe wrenches or bits, socket set, screwdrivers
6. For installation in concrete slabs: concrete saw
7. Adult installers - 2 minimum

"C" Spring Rider - Buzzy

961



MIRACLE
RECREATION EQUIPMENT COMPANY

Bug Bites® "C" Spring Rider - Buzzy

STEP 1 DIG FOOTINGS

Consult the *CPSC Handbook* for guidelines for placement of Spring Riders, Bouncers, etc. Locate and dig **two 18" diameter footings, 18" deep**.

STEP 2 ATTACH PINCH PLATES TO BASES; LEVEL IN FOOTINGS

PRIOR to setting bases in footings, attach Pinch Plate as shown in **Illustration A**. Ensure bases are level with each other, then lower into footings (See **Illustration B**). **DO NOT** pour concrete until both bases are level and plumb with each other and within the footings.

Pour concrete within 6" of base tops and allow concrete to cure completely prior to affixing Rider Assembly.

ILLUSTRATION A

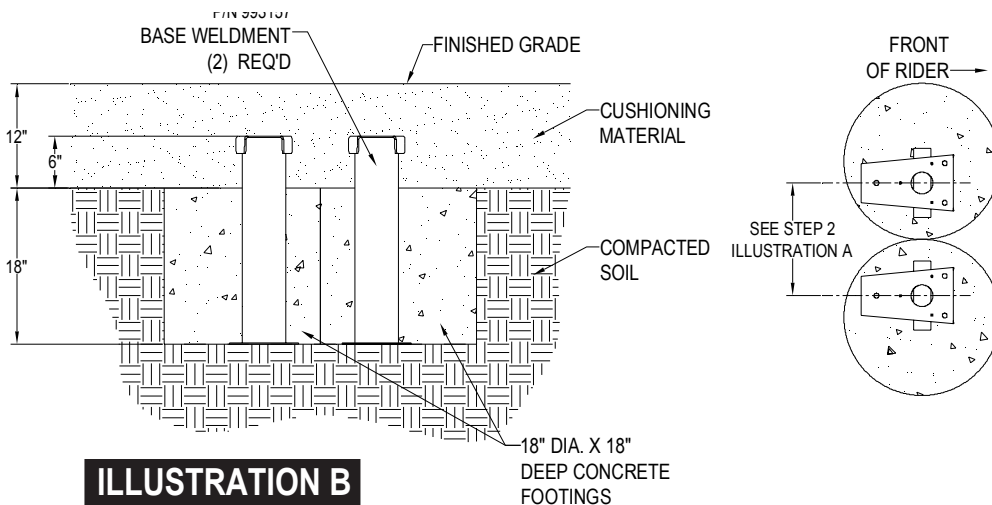
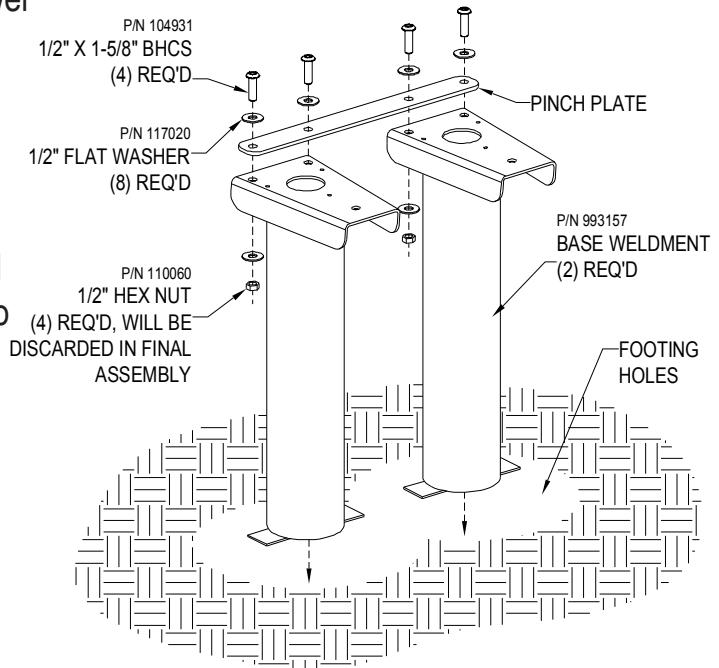


ILLUSTRATION B

"C" Spring Rider - Buzzy

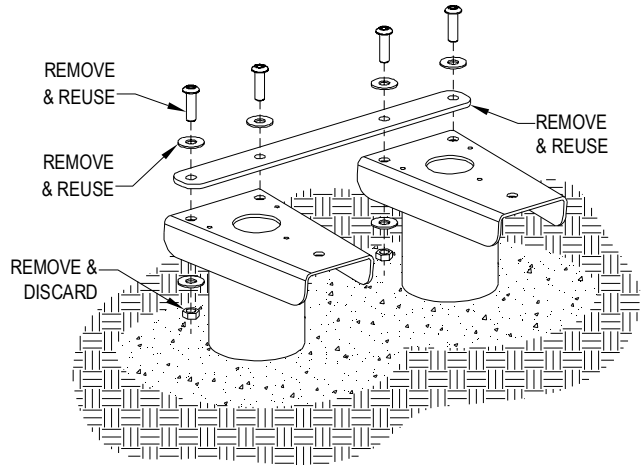


MIRACLE Bug Bites® "C" Spring Rider - Buzzy

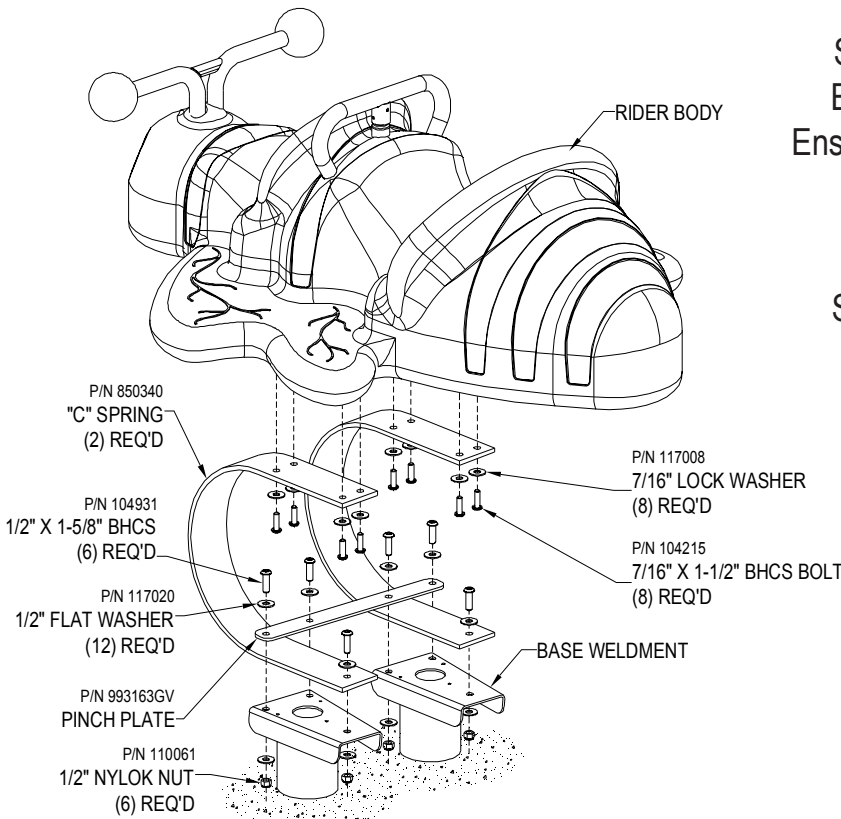
RECREATION EQUIPMENT COMPANY

STEP 3 REMOVE PINCH PLATE AND SET ASIDE

Once concrete is cured, remove pinch plate as shown and set Pinch Plate and 1/2" bolts aside for use in Step 4. Remove and discard 1/2" hex nut.



STEP 4 ATTACH "C" SPRINGS TO RIDER BODY



Bolt Pinch Plate over "C" Springs and Bases as shown. Bolt Springs to front of Bases. Ensure "C" Springs are level and plumb on Bases.

Bolting **upward** through "C" Springs, attach Rider Body as shown.

"C" Spring Rider - Buzzy



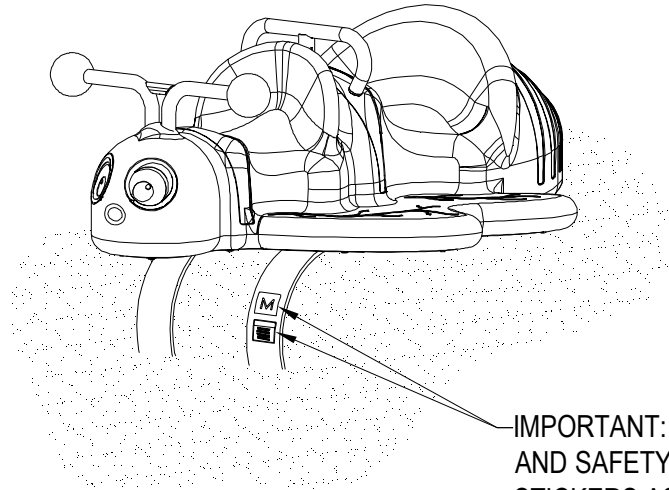
MIRACLE
RECREATION EQUIPMENT COMPANY

Bug Bites® "C" Spring Rider - Buzzy

STEP 7 AFFIX IDENTIFICATION/WARNING STICKERS TO "C" SPRING

Apply provided Miracle identification and warning stickers to "C" Spring as shown.

IMPORTANT NOTE: It is imperative that these stickers are **CLEARLY** visible.



IMPORTANT: FOR IDENTIFICATION AND SAFETY PURPOSES APPLY STICKERS AS SHOWN.

FINAL STEP

Refer to *Final Assembly installation* located behind *Installations 101* in Installation Manual.

Bill of Materials

BUZZY "C" SPRING RIDER - MODEL #961

2	850340	"C" SPRING PAINTED BLACK
1	991987	BUMBLEBEE SPRING RIDER ASSEMBLY
2	993157GV	BASE WELDMENT-C SPRING RIDER
1	993489	PARTS CARTON (SEE BELOW FOR CONTENTS)

PARTS CARTON # 993489

8	104215	BOLT, 7/16-14 X 1-1/2, BHCS 6 LOBE 18-8 SS
6	104931	BOLT 1/2-13 X 1 5/8 BHCS 6 LOBE 18-8 SS
4	110060	NUT 1/2-13 18-8 SS
6	110061	NUT 1/2-13 HEX NYLOK 18-8 SS
8	117008	WASHER 7/16 LOCK 18-8 SS
12	117020	WASHER 1/2 FLAT 18-8 SS MS-819
1	993163GV	PINCH PLATE-DOUBLE C SPRING 18" LONG GALV
1	116021	LABEL MIRACLE ID - GENERIC
1	116022	LABEL WARNING - PLAYGROUND
1	104478	BIT T-50 FOR 7/16 BOLT
1	104481	BIT T-55 FOR 1/2 BOLT

"C" Spring Rider - Buzzy

961